

Supporting Flexibility and Healing at MetroHealth Cleveland Heights Behavioral Health Hospital

CLEVELAND HEIGHTS, OHIO, USA



At Stance, it's an honor to play any part in supporting an overall exceptional healthcare environment. The furniture we make is intentionally designed to blend seamlessly with the aesthetics and treatment goals of every unique facility we help furnish, and in Behavioral Health settings, every detail from colors, to textures, to safety elements is vitally important for a positive therapeutic experience. The newly opened

MetroHealth Cleveland Heights Behavioral Health Hospital is another example of how Stance's products go on to support our mission of Improving Lives by Design.

This facility is a 100-bed dual treatment center for adolescent, adult, and geriatric patients undergoing Behavioral Health and addiction therapy. The hospital serves an area experiencing heightened need for psychiatric care, making every facility-planning decision of utmost importance. Under the architectural and interior design direction of Hasenstab Architects Inc., the hospital utilizes subtle safety and calming elements throughout the layout and design of the space. Those elements include clean lines of sight between patients and providers, to rounded corners on nurse's stations, to relaxing deep teal and green tones, and nature elements throughout the aesthetic, including artwork depicting meadow and forest themes.



"The Stance Behavioral Health products are a perfect fit for this customer. They provide a nice aesthetic, durability, and comfort."

- Robin Brawner, Sales Associate at Thentic Furniture Group

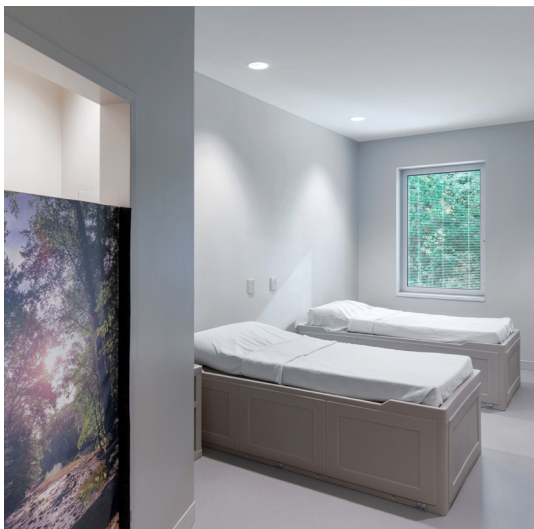
Several Stance collections complement this calming, well-planned environment, with our products featured throughout the space, from patient rooms to the mix of quiet and noisy social areas. According to the facility design team, one of the major goals for the space was to incorporate opportunities for patient choice into the design – so it makes sense that some of our most versatile Behavioral Health collections were selected for this space:

- **Resilia** drum tables (2017 HCD Nightingale GOLD Award Winner): Our Resilia drum tables are ideal for BH spaces like this hospital, due to their rounded shape, sturdy base, and virtually indestructible surface material, made from Marmoleum flooring product. Resilia is offered in multiple sizes, and facility teams like it for its flexibility in different areas, as well as the longevity of use it provides.



- **Frontier** bed and shelves (2019 HCD Nightingale GOLD Award Winner): Patients can relax and sleep in comfort, with the Frontier collection that's safe while still offering a residential-feeling aesthetic. This is a more humanizing pick for

BH facilities, where patient rooms are often particularly at-risk locations for self-harm. This bedroom collection offers extreme safety, while helping to keep the end-user at ease with its softer look.



- **Flo** dining table and chairs (2021 HCD Nightingale GOLD Award Winner): Our Flo is the ultimate multi-tasking BH product. This dining collection is often selected for BH facility dining and congregating areas, where socialization is introduced and plays

an important part in patients' rehabilitation.

- **Terrace** outdoor collection: Nature and the outdoors have been proven to enhance the wellness and overall healing experience for BH patients, and our Terrace collection is a safe and supportive option for facilitating outdoor time. Featuring tamper-resistant fasteners for added safety, Terrace is supremely durable and made to last with UV damage and fade-resistant materials.



- **Jax** metal seating: Our Jax chairs are strong, comfortable and easy to clean, with subtle safety elements like tamper-resistant fasteners and bolt-to-floor brackets supporting myriad uses in the BH environment. With a comfortable, one-piece seat and back, patients, providers and visitors are encouraged to relax for any period of time with a more inviting metal seating option than is typically available.

- **Accent** metal seating: Another excellent and subtly safe metal seating option for this, and any BH hospital is our Accent collection, which features clear, non-marring glides that protect floors from damage and a sled base that enables the frame to be bolted to the floor.

It was our honor to be selected to support the MetroHealth Cleveland Heights Behavioral Health Hospital with Stance furniture. This facility is one of many settings we proudly support with furniture that is intended to provide comfort, minimize distraction, and perform reliably for the patients, care providers, and visitors we ultimately serve. View our other BH case studies [here](#) and our entire BH collections portfolio [here](#).